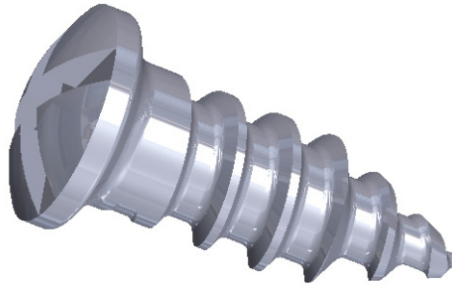


2.0MM MANDIBLE CORTEX SCREW (STANDARD PITCH 1.0MM) SELF DRILLING



2.0MM MANDIBLE CORTEX SCREW (STANDARD PITCH 1.0MM) SELF DRILLING

CAT. NO.	PRODUCT DESCRIPTION
706.336	2.0MM MANDIBLE CORTEX SCREW (STANDARD PITCH 1.0MM) SELF DRILLING X 6.0 MM
706.338	2.0MM MANDIBLE CORTEX SCREW (STANDARD PITCH 1.0MM) SELF DRILLING X 8.0 MM

Specification

- Screw is available in titanium.

Indication for use

- The 2.0MM Mandible Cortex Self-Drilling Screw is intended for use in the fixation of fractures, osteotomies, or reconstruction of the mandible in maxillofacial surgery. It is specifically designed for use in non-load bearing regions requiring stable cortical bone fixation without the need for pre-drilling.