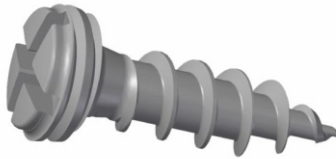


LCP MANDIBLE LOCKING SCREWS SELF DRILLING Ø2.0 MM



LCP MANDIBLE LOCKING SCREWS SELF DRILLING Ø2.0	
CAT. NO.	PRODUCT DETAILS
706.126	LCP MANDIBLE LOCKING SCREWS SELF DRILLING Ø2.0 MM X
706.128	LCP MANDIBLE LOCKING SCREWS SELF DRILLING Ø2.0 MM X

Specification

- Screw is available in titanium.

Indication for use

- The Ø2.0 mm LCP Mandible Locking Self-Drilling Screws are used for the rigid internal fixation of mandibular fractures, osteotomies, and reconstructions. Designed for use with locking compression plates (LCP), these screws provide angular stability and enhanced fixation in cortical bone without the need for pre-tapping.